

ACURE4Moms Study

(Accountability for Care through Undoing Racism & Equity for Moms)

May 9, 2022



SCHOOL OF MEDICINE

Obstetrics and Gynecology

How to decrease maternal health disparities?

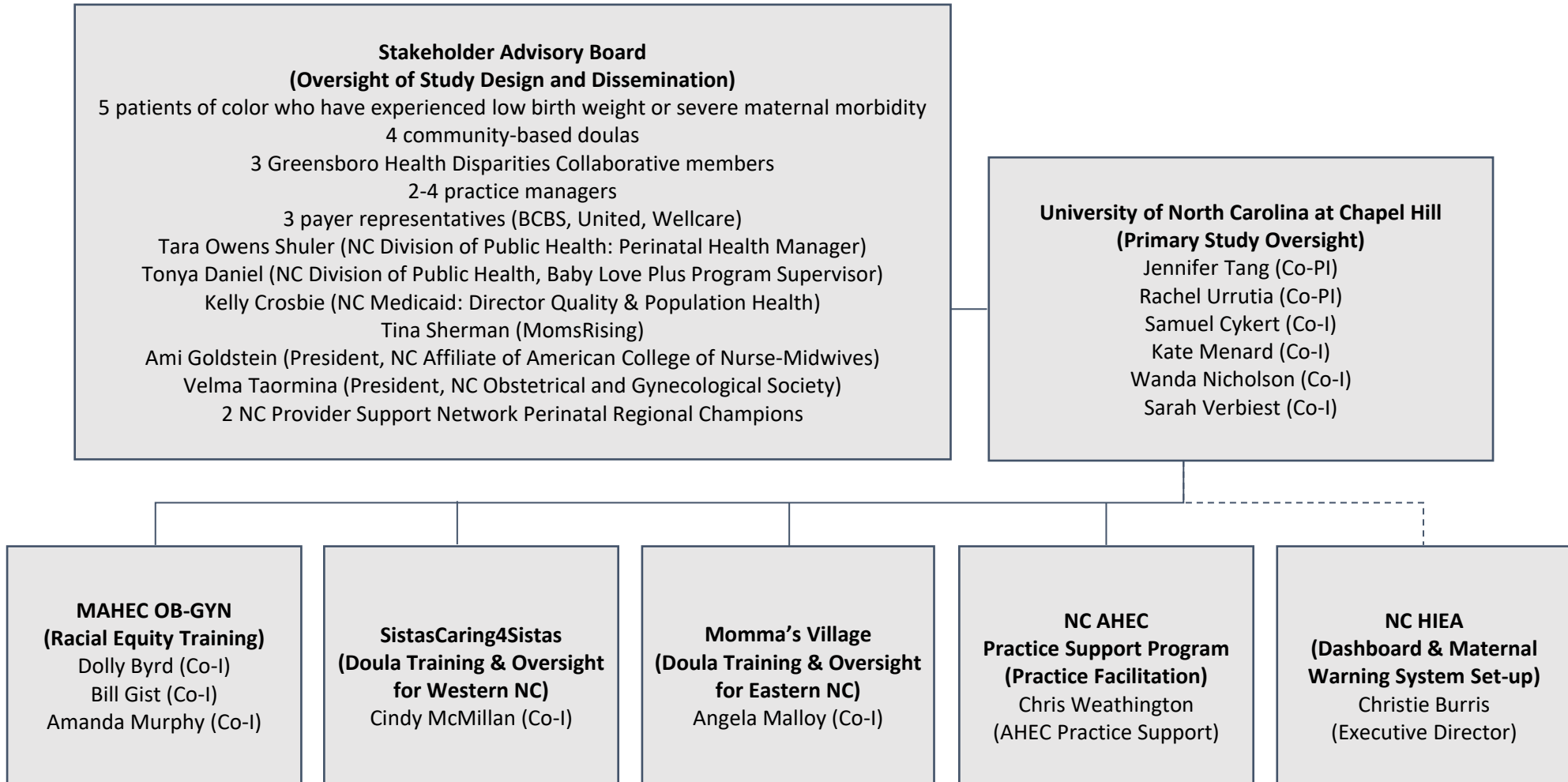
- Lack of proven interventions to decrease Black-White disparities in maternal health.
 - ACCURE* study eliminated lung & breast cancer disparities
 - Quarterly presentation of race-stratified **Data Dashboard**
 - Quarterly **Racial Equity Training**
 - **Early Warning System**
 - Community-Based Doula support associated with ↓LBW in Greensboro

*ACCURE=Accountability for Cancer Care through Undoing Racism and Equity

Cykert, et al. J Natl Med Assoc 2019



ACURE4Moms Study Partners



ACURE4Moms Study Design

- Four arm cluster RCT of 40 practices:
 - 1) Standard Care Management (**Control Arm**)→ 10 practices
 - 2) Data Interventions-Only (**Data Arm**)→ 10 practices
 - 3) Community-Based Doula Support-Only (**Doula Arm**)→ 10 practices
 - 4) Data Interventions + Doula Support (**Data+Doula Arm**)→ 10 practices

ACURE4Moms Study Aims & Outcomes

- Aim 1: Compare proportion of Black women who deliver a **low birthweight** baby between Arms (**Primary Outcome**).
- Aim 2: Compare **# ED visits and hospitalizations** during pregnancy and up to 1 year after delivery between Arms.
- Aim 3: Explore trends in **self-reported racism** during pregnancy and up to 4 months after delivery between Arms through patient surveys.

Practice Participation Benefits

- All practices would receive:
 - IT/Informatics Support to help monitor OB outcomes & indicators
 - Support collecting data to assist with pay-for-performance guidelines
 - Support from AHEC Practice Facilitators & UNC OB/GYN Consultants
 - Payment for acquisition of quarterly follow-up data (~\$13,000 over 2 years)
 - Staff compensation for completing study surveys & interviews



Practice Participation Expectations

- All practices would be expected to:
 - Allow staff to attend 1-hour quarterly meetings to discuss project-related topics.
 - Provide study staff with patient contact information to consent them to participate in deidentified surveys about patient care experiences and maternal-infant EHR linkage.
 - Provide a champion team (Nurse and Provider) to participate actively in the project.

Data Arm Benefits & Expectations

- **Racial Equity Training** with quarterly follow-up for practice staff
 - Provider Champion, Nurse Navigator, & Admin Lead can undergo 2-day REI Phase I Training (\$300 registration fee paid by study)
- **Dashboard** quarterly review sessions, led by Provider Champion and supported by research team
- **Maternal Warning System** for missed visits/parameters and abnormal values with real-time feedback
- IT set-up and support for the **Dashboard** and **Warning System**

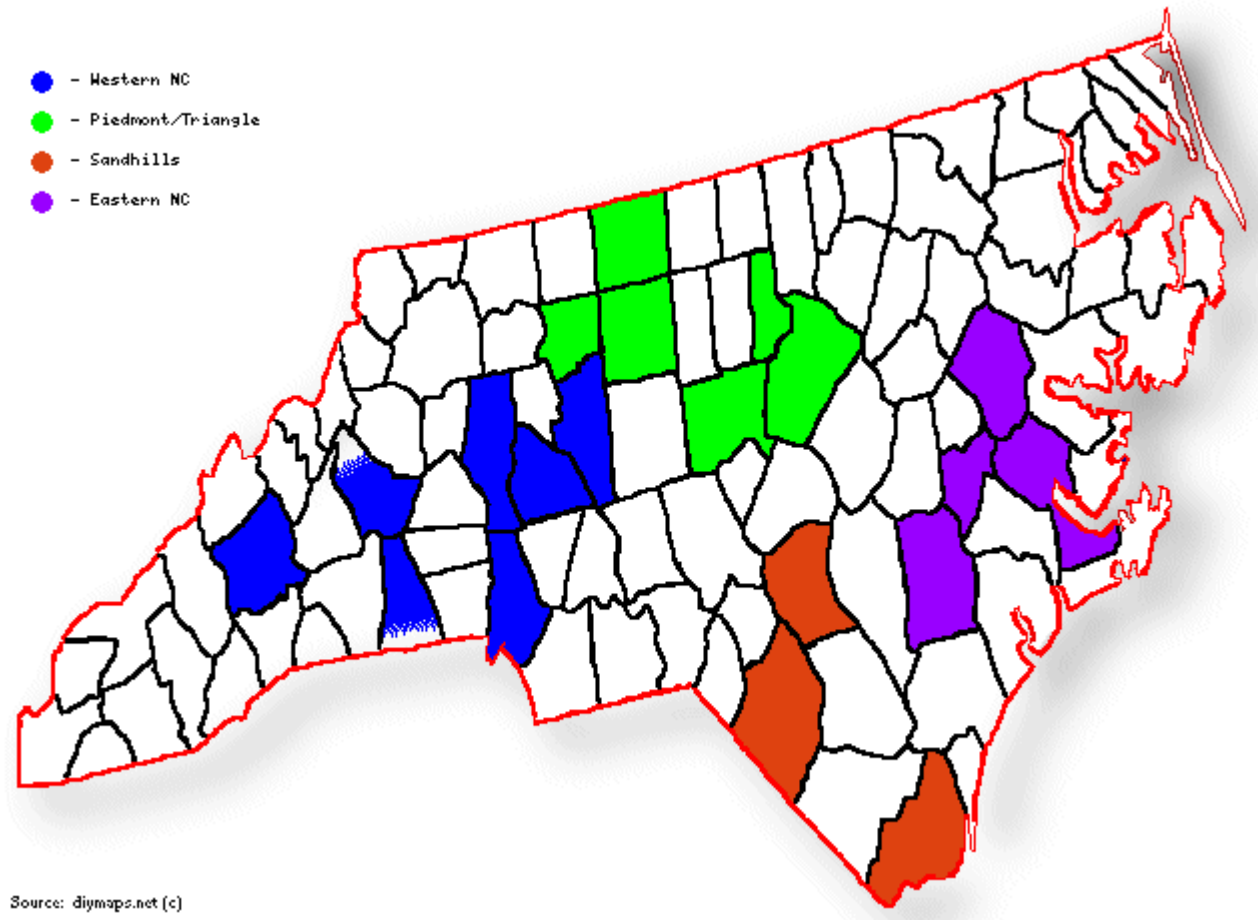
Doula Arm Benefits & Expectations

- Partnership and support from local Doulas in supporting high-risk patients and referral to local community resources
- Participate in shared patient care with Doulas:
 - Allow our Doulas to attend 2 prenatal visits with their high-risk patients
 - Allow our Doulas to attend deliveries at practice-affiliated hospitals
- Doula support paid for by the study for 2 years
 - ~6 births/month or 144 births total

Current Community-Based Doula Hubs Across the State

Targeted Counties:

- Anson
- Buncombe
- Chatham
- Cleveland
- Craven
- Cumberland
- Davidson
- Duplin
- Durham
- Forsyth
- Gaston
- Guilford
- Iredell
- Lenoir
- Mecklenburg
- Pitt
- Robeson
- Rowan
- Rockingham
- Wake



Practice Criteria

- Be willing to be randomized to 1 of the 4 Arms
- Be in (or close to) 1 of the Targeted Counties
- Have at least 7-8 deliveries of Black women per month



Timeline

- Apr 1, 2022: award starts
- June 30, 2022: all 40 practices recruited
- Oct-Dec 2022: onboard first 10 practices
- Sep 2023: onboard final practices
- Jul 2025: Arm 1 sites begin implementation of desired interventions
- Mar 2027: award ends

Questions?

- Rachel Peragallo Urrutia: rachel_peragallo@med.unc.edu
- Jennifer Tang: jennifer_tang@med.unc.edu
- Angela Malloy: angela@mommasvillage.org
- Cindy McMillan: cindy@sistasaring4sistas.org





THE UNIVERSITY
of NORTH CAROLINA
at CHAPEL HILL