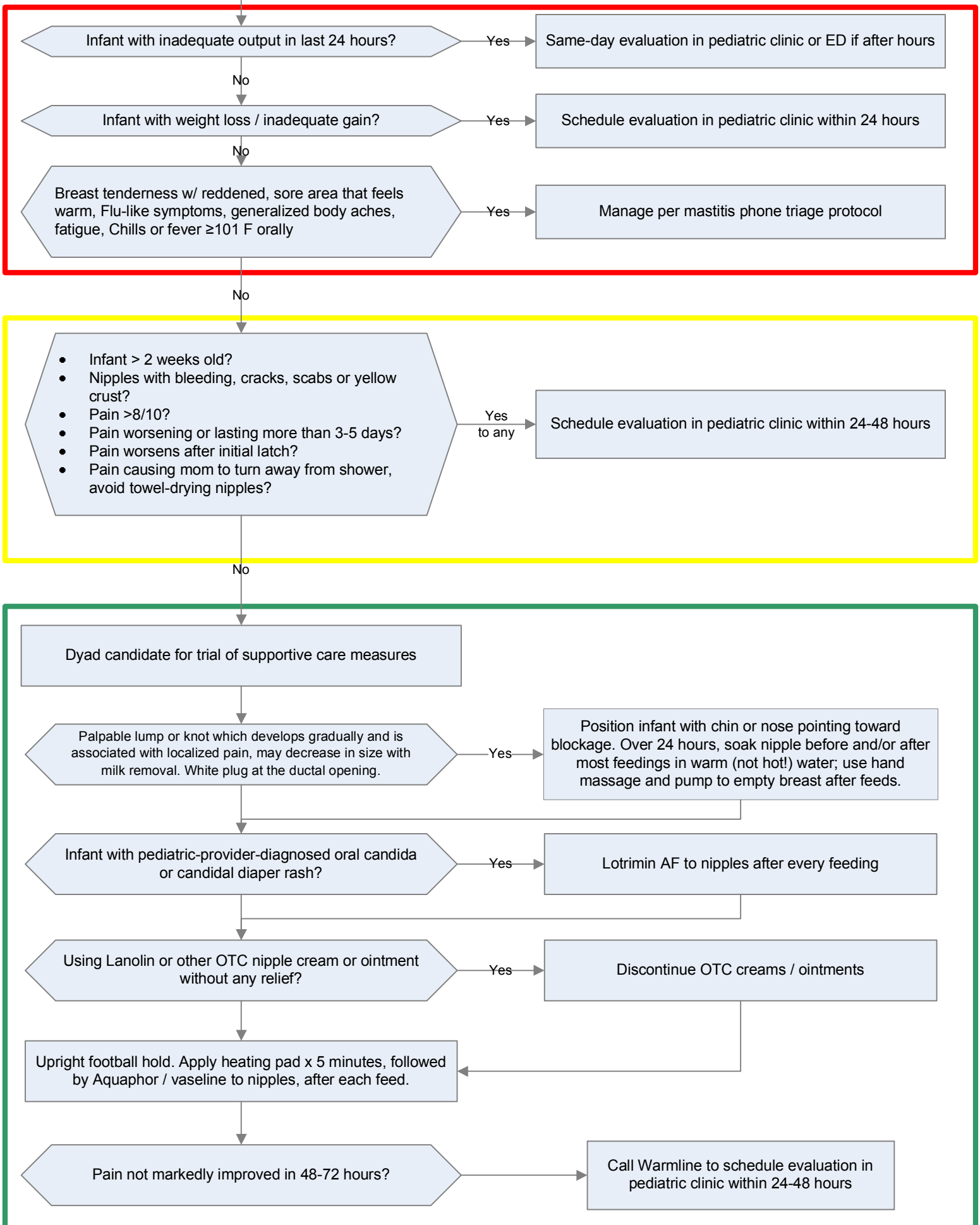


# LC Phone Triage: Pain



Infant with inadequate output in last 24 hours?

Yes

Same-day evaluation in pediatric clinic or ED if after hours

No

Infant with weight loss / inadequate gain?

Yes

Schedule evaluation in pediatric clinic within 24 hours

No

Breast tenderness w/ reddened, sore area that feels warm, Flu-like symptoms, generalized body aches, fatigue, Chills or fever  $\geq 101$  F orally

Yes

Manage per mastitis phone triage protocol

No

- Infant > 2 weeks old?
- Nipples with bleeding, cracks, scabs or yellow crust?
- Pain >8/10?
- Pain worsening or lasting more than 3-5 days?
- Pain worsens after initial latch?
- Pain causing mom to turn away from shower, avoid towel-drying nipples?

Yes to any

Schedule evaluation in pediatric clinic within 24-48 hours

No

Dyad candidate for trial of supportive care measures

Palpable lump or knot which develops gradually and is associated with localized pain, may decrease in size with milk removal. White plug at the ductal opening.

Yes

Position infant with chin or nose pointing toward blockage. Over 24 hours, soak nipple before and/or after most feedings in warm (not hot!) water; use hand massage and pump to empty breast after feeds.

Infant with pediatric-provider-diagnosed oral candida or candidal diaper rash?

Yes

Lotrimin AF to nipples after every feeding

Using Lanolin or other OTC nipple cream or ointment without any relief?

Yes

Discontinue OTC creams / ointments

Upright football hold. Apply heating pad x 5 minutes, followed by Aquaphor / vaseline to nipples, after each feed.

Pain not markedly improved in 48-72 hours?

Call Warmline to schedule evaluation in pediatric clinic within 24-48 hours